



Bloomfield Club News

Bloomfield Club Recreation Association

JUNE 2012

OUTDOOR FUN BEGINS!

**POOL HOURS: 11:00 a.m. - 8:00 p.m. on
Weekdays; 10:00 a.m. - 8:00 p.m. on
Holidays and Weekends**

IMPORTANT POOL RULES:

- All guests must be accompanied by a resident.
- Children under 14 years of age must be accompanied by an adult at all times.
- Children not toilet trained are permitted in the wading pool only and must have rubber/plastic pants over the diaper. Swimwear is also required.
- No strollers allowed on the pool deck.
- Food, drink, gum and tobacco are allowed in the patio area only.
- Only drinking water in a plastic container is allowed in the pool area.

CALENDAR

CLUB EVENTS

Friday, June 15th: Ice Cream Social
Saturday, July 26th: Summer Party

MEETINGS

20 - BCRA Board Meeting, 7:00
27 - BCII Board Meeting, 7:00



ANNOUNCING

PICNIC AT THE POOL

Saturday, July 28th

1:00-4:00 p.m.

Grilled Hamburgers, Hot Dogs,
Baked Beans,

Potato Salad, Cole Slaw,

Ice Cream and Lemonade.

Games, Music & Tons of Fun!!!

More details next month.

BOARD NOTES

At the May 16th Board Meeting, the Board approved the following:

- ◆ Bela Plumbing to install a detention basin restrictor in the pond.
- ◆ Renew the Association's insurance with Traveler's Insurance.
- ◆ Green Horizons to install annual flowers on Schick Road/Clubhouse.
- ◆ Pool Covers Direct to add padding to the new pool cover to protect the cover from the coping stones.

ICE CREAM SOCIAL

**FRIDAY, JUNE 15th
6:30—8:00 p.m.**

All residents are welcome on the outdoor patio for ice cream cones, banana splits and sundaes with all the fixin's - chocolate syrup, hot fudge, butterscotch, strawberries, whip cream, nuts and cherries.

How could you have a better & more healthy meal!?!??



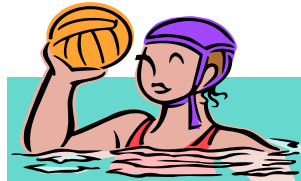
**This party will proceed
rain or shine.**

NO GUESTS, FOR RESIDENTS ONLY

CAFÉ CONCESSION STAND

There's a change this season! Ice cream bars, ice cream sandwiches, cones and bottled water will be sold. No other food products will be sold.

All assessments must be current before using Clubhouse facilities. If an account is not current, the ID card will not allow access to the Clubhouse or the Pool Area. Please note that children under 18 years cannot use the indoor pool unless they are accompanied by an adult. Also, children under 5 years are not allowed in the spa.



NEW GUEST CARD RULES

The current By-Laws allow residents to "borrow" up to 6 Guest Passes from other residents for their use. At the July Board Meeting, the Board approved the availability of up to 12 total Guest Passes that could be issued daily by the Clubhouse attendant instead of "borrowed" passes. These Club Guest Passes will be issued on a first-come first-serve basis and are valid for only the day of issue. A resident may use his/her 2 Guest Passes and up to 6 Club Guest Passes to bring in a total of up to 8 guests. "Borrowed" passes may not be used at the same time as the Club Guest Passes. A log of passes will be kept.

REMINDERS - make sure you maintain the ambiance of our Association. All trash cans must be stored in the garage and items such as ladders, construction and lawn materials, cannot be visible from the street. Please pick up all newspapers on your driveway.



BOARD OF DIRECTORS

President

Shawn Rodgers (BCIII)

Vice President

Mary Bahr (Luxury Homes)

Treasurer

Paul Palz (Luxury Homes)

Secretary

Marietta Serenda (BCIII)

Directors

Joseph Chranko (BCII)

Mike Novinski (BCI)

Rich Tinaglia (BCI)

CLUBHOUSE STAFF

Club Director

Douglas Higgins

Administrative Assistant

MarLene McGuire

Attendants

Christin Doyle

Eddie Eisman

John McGuire

Peter Schenz

Clubhouse

Telephone: 630-529-9660

Website: bloomfieldclub.org

E-mail: club@bloomfieldclub.org

BCRA MANAGEMENT CO.

EPI: 630-990-0050

14032 S. Kostner

Crestwood, IL 60445

Property Manager:

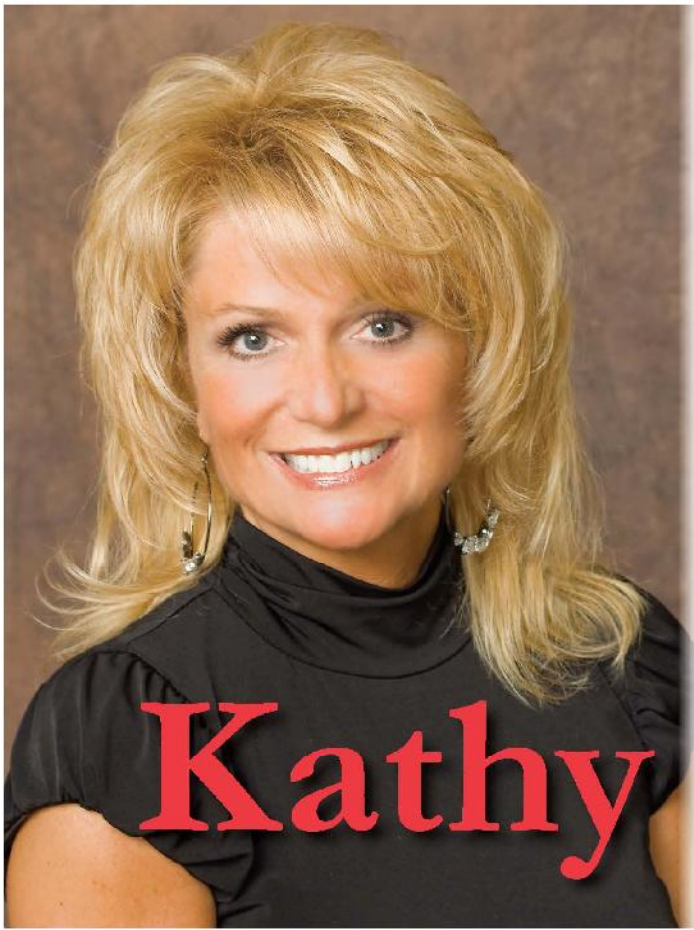
Steve Elmore

BCI: Williamson Management

630-787-0305

BCII, BCIII & BCRA:

EPI Management



Kathy Maykut

630.339.4051

450 West Army Trail Road
Bloomington, Illinois 60108
(SW Corner of Army Trail & Gary Avenue)



Three Offices to Serve You...

BLOOMINGDALE ▪ ST. CHARLES ▪ SUGAR GROVE

www.KathyMaykut.com

**Multi -Million
Dollar Producer
RE/MAX All Pro**

Broker Associate. CDPE. CNC. CSC

HELLO NEIGHBOR!

Important information regarding

WHERE WE LIVE!

Now is the time of year for real estate opportunities! With rates near historical lows and a large inventory of homes for sale, there's never been a better time to move into a larger home, downsize or invest. Call me today for a FREE home buying or selling market analysis.

Honesty Trust
Neighborhood Expertise



**RE/MAX All Pro
Kathy Maykut
Broker Associate
CNC, CSC, CDPE
630-339-4051**



J.C. Licht | Epco Paint & Decorating Centers

Chicago's home for all paint, window fashions and wallpaper
158 S. Gary Avenue, Bloomingdale, (630) 351-5700

"Experience quality service"

Introducing:

Flo Winfield, Professional Design Consultant
(In home design consultations available)

Authorized dealer for:

Hunter Douglas, Graber, Comfortex

Mention this ad and receive an additional 10% off your window treatment order.



Kim Smuda

Project Coordinator