



# Bloomfield Club News

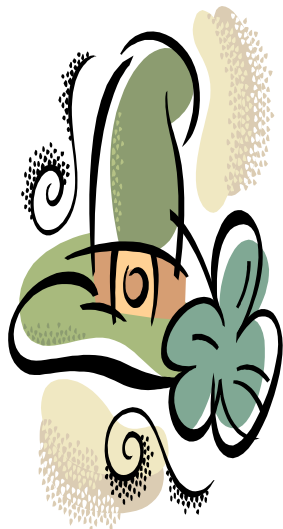
*Bloomfield Club Recreation Association*

## RESIDENT CHAMPAGNE BRUNCH! SUNDAY, MARCH 11th 11:00 a.m.—1:00 p.m.

All Bloomfield Club Residents are welcome to this delicious event. *THINK SPRING*, You'll enjoy the company of your neighbors and you'll enjoy a wonderful brunch as the winter blues get chased away early in the up-coming season.

**SCRAMBLED EGGS, COOKED ON-SITE**

- BAKED SLICED HAM**
- CHEESE BLINTZES WITH BLUEBERRIES**
- FRENCH TOAST WITH MAPLE SYRUP**
- BACON/LINK SAUSAGE**
- FRESH FRUITS/CHEESE TRAYS**
- HASH BROWN POTATOES**
- HOT MIXED VEGETABLES**
- MUFFINS, BAGELS AND DANISH**
- ORANGE, GRAPEFRUIT**



**PLEASE R.S.V.P.**

In an effort to control costs, Residents must register and pick up tickets at the Clubhouse. No phone reservations, please. Tickets must be presented at the door.

Pick up your free tickets for this Resident event at the Clubhouse  
by  
**Wednesday, March 7th**

**MARCH 2012**

**CLUB EVENTS**  
Card Club - Every Wednesday, 1:00-4:00

**MEETINGS**  
1 - BCI Board Meeting, 7:00  
14 - BCIII Board Meeting, 7:00  
21 - BCRA Board Meeting, 7:00  
28 - BCII Board Meeting, 7:00

**COMING EVENTS**  
May 19th Garage Sale, 9:00-4:00  
May 26th Outdoor Pool Opening  
May 27th Pool Opening Party  
June 15th Ice Cream Social



## BOARD NOTES

**At the February 15th Board Meeting, the Board approved the following:**

- ◆ **Tennis Surfaces Co. to repair cracks on the tennis courts.**
- ◆ **First Fence to repair 8 posts on the tennis court fence.**
- ◆ **First Fence to rebuild the garbage corral on the west side of the Clubhouse.**
- ◆ **Remodel the Clubhouse kitchen.**



**SATURDAY, March 31st**

**11:00a.m. - 12:30p.m.**

**Meet the EASTER BUNNY and get a gift!**

There will be delicious food then lots of Easter egg huntin'. And these eggs have candy in them!

Bring your baskets and a camera.

Resident children are admitted at no charge; guest children are \$5.00 each and adults are \$3.00 each. R.S.V.P. and pick up your tickets at the Clubhouse by **Wednesday, March 28th.**

**Note: The date change from 2012 Resident Social Calendar**

## REMINDERS/INFO

### ID/ACCESS CARDS:

- ◆ Please note that you must use your ID Card for access to the Clubhouse/Facilities. The Attendant will give one warning if the ID Card is not used. If the ID Card is not used again, entrance will be denied.
  - ◆ Guests are not allowed to use the facility without the resident present.
  - ◆ Children 14 to 17 years old cannot use their parents ID Card to gain access to Clubhouse facilities. They must ring the doorbell and bring their own ID Card.
- If you have a dog, make sure you pick up after it; also make sure it is not disturbing your neighbors and that it is on a leash when outside.
  - In the indoor pool, any resident under 18 years of age must be accompanied by an adult. Also, children under five years of age are not allowed to use the Spa.

### ***GO GREEN AND BE BETTER INFORMED!!!***

Send us your e-mail address so we can send this Newsletter Electronically and inform you of updated information, emergencies, etc.



### BOARD OF DIRECTORS

#### **President**

Shawn Rodgers (BCIII)

#### **Vice President**

Mary Bahr (Luxury Homes)

#### **Treasurer**

Paul Palz (Luxury Homes)

#### **Secretary**

Marietta Serenda (BCIII)

#### **Directors**

Joseph Chranko (BCII)

Mike Novinski (BCI)

Rich Tinaglia (BCI)

### CLUBHOUSE STAFF

#### **Club Director**

Douglas Higgins

#### **Administrative Assistant**

MarLene McGuire

#### **Attendants**

Eddie Eisman

John McGuire

Peter Schenz

#### **Clubhouse**

Telephone: 630-529-9660

Website: [bloomfieldclub.org](http://bloomfieldclub.org)

E-mail: [club@bloomfieldclub.org](mailto:club@bloomfieldclub.org)

### BCRA MANAGEMENT CO.

**EPI:** 630-990-0050

14032 S. Kostner

Crestwood, IL 60445

#### **Property Manager:**

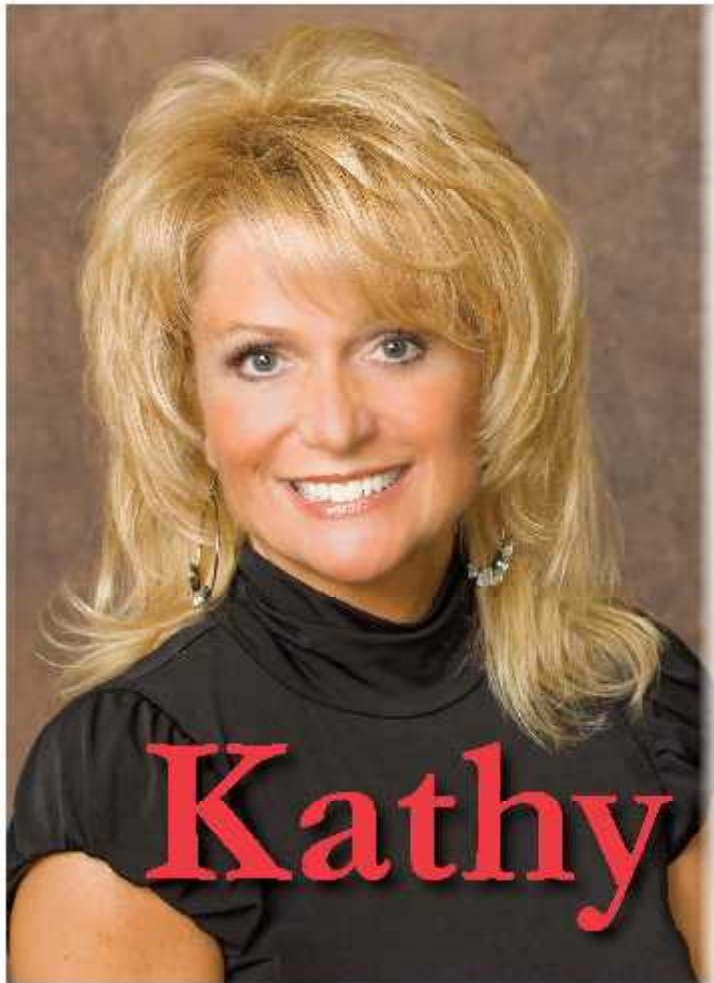
Steve Elmore

**BCI: Williamson Management**

630-787-0305

**BCII, BCIII & BCRA:**

**EPI Management**



**Kathy**



**630.339.4051**

450 West Army Trail Road  
Bloomington, Illinois 60108  
(SW Corner of Army Trail & Gary Avenue)

*Three Offices to Serve You...*

BLOOMINGDALE • ST. CHARLES • SUGAR GROVE

[www.KathyMaykut.com](http://www.KathyMaykut.com)

**Multi -Million  
Dollar Producer  
RE/MAX All Pro**

**Maykut**

Broker Associate, CDPE, CNC, CSC

**Spring**

**FORWARD**

SUNDAY, MARCH 11, 2012

Springtime brings many new opportunities. If there's a change in your real estate needs this season, please call me. I'd be happy to discuss your options with a FREE no-obligation market analysis. PS: Don't forget to set your clocks ahead 1 hour on March 11, 2012.



**RE/MAX All Pro  
Kathy Maykut  
Broker Associate  
CNC, CSC, CDPE  
630-339-4051**



CERTIFIED DISTRESS  
PROPERTY EXPERT

Solving the foreclosure crisis  
one homeowner at a time.

