



Bloomfield Club News

Bloomfield Club Recreation Association

OUTDOOR FUN BEGINS!

**POOL HOURS: 11:00 a.m. - 8:00 p.m. on
Weekdays; 10:00 a.m. - 8:00 p.m. on
Holidays and Weekends**

IMPORTANT POOL/PATIO RULES:

- ◆ There is no smoking on the patio (New Rule)
- ◆ All guests must be accompanied by a resident.
- ◆ Children under 14 years of age must be accompanied by an adult at all times.
- ◆ Children not toilet trained are permitted in the wading pool only and must have rubber/plastic pants over the diaper. Swimwear is also required. (We apologize that we announced in April that this Rule was changed.)
- ◆ No strollers allowed on the pool deck.
- ◆ Food, drink and gum are allowed in the patio area only.
- ◆ Only drinking water in a plastic container is allowed in the pool area.
- ◆ At no charge, children's cards will be changed at 14 years old & 18 years old. See attendant.
- ◆ See Section XVII of the Revised Rules and Regulations (5/14).

**ANNOUNCING
PICNIC AT THE POOL**
Saturday, July 26th
Noon - 4:00 p.m.
Games, Music & Tons of Fun!!!
See more details next month.
Guests welcome!
Volunteers needed

JUNE 2014

CLUB EVENTS

Friday, June 13th: Ice Cream Social
Saturday, July 26th: Summer Party

MEETINGS

4 - BCII Board Meeting, 7:00
5 - BCI Board Meeting, 7:00
16 - BCIII Meeting, 7:00
18 - BCRA Board Meeting, 7:00



BOARD NOTES

At the May 21st Board Meeting, the Board approved the following:

- ◆ Soccer & Tennis Surfaces to crack seal the tennis courts.
- ◆ Green Horizon for flowers at the front entry and the front of the Clubhouse.
- ◆ Green Horizon to replace three trees by the patio & tennis courts.
- ◆ Revisions to the Rules & Regulations (A copy of the revised Rules will be on the website and a hard copy will be available at the Clubhouse.)
- ◆ SPMS to repipe the spa booster pump.
- ◆ Tru Green to give 3 apple scab treatments to the crabapple trees, to apply a Grub Control product, and to apply 3 Beetle Control applications.
- ◆ Premier Design to repaint the front entry railing & make dryvit repairs.

ICE CREAM SOCIAL

FRIDAY, JUNE 13th
6:30—8:00 p.m.

All residents are welcome on the outdoor patio for ice cream cones, banana splits and sundaes with all the fixin's - chocolate syrup, hot fudge, butterscotch, strawberries, whip cream, nuts and cherries.

How could you have a better & more healthy meal!??

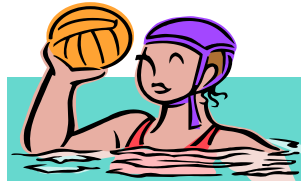


**This party will proceed
rain or shine.**

RESIDENTS- FREE
GUESTS - \$3.00

R.S.V.P. at the Clubhouse

All assessments must be current before using Clubhouse facilities. If an account is not current, the ID card will not allow access to the Clubhouse or the Pool Area. Please note that children under 18 years cannot use the indoor pool unless they are accompanied by an adult. Also, children under 5 years are not allowed in the spa.



GUEST CARD RULES

The revised Rules allow residents to "borrow" up to 6 Guest Passes from other residents or the Clubhouse for their use. The Club Guest Passes will be issued on a first-come first-serve basis and are valid for only the day of issue. A resident may use his/her 2 Guest Passes and up to 6 Club Guest Passes to bring in a total of up to 8 guests. "Borrowed" passes may be used at the same time as the Club Guest Passes as long as the maximum of 8 guests is not exceeded. The attendants will keep a log of issued Club passes.

**REMINDERS - make sure you maintain the
ambiance of our Association. All trash cans
must be stored in the garage and items such
as ladders, construction and lawn
materials, cannot be visible from the street.
Please pick up all newspapers on your driveway and pick
up after your dog.**



BOARD OF DIRECTORS

President

Shawn Rodgers (BCIII)

Vice President

Mike Novinski (BCI)

Treasurer

Paul Palz (Luxury Homes)

Secretary

Marietta Serenda (BCIII)

Directors

Joseph Chranko (BCII)

Tony Fato (Luxury Homes)

Rich Tinaglia (BCI)

CLUBHOUSE STAFF

Club Director

Douglas Higgins

Administrative Assistant

MarLene McGuire

Attendants

Marge Harmon

John McGuire

Megan Stermetz

Stephanie Vazquez

Clubhouse

Telephone: 630-529-9660

Website: bloomfieldclub.org

E-mail: club@bloomfieldclub.org

BCRA MANAGEMENT CO.

EPI: 630-990-0050

14032 S. Kostner

Crestwood, IL 60445

Property Manager:

Steve Elmore

BCI: Williamson Management

630-787-0305

BCII, BCIII & BCRA:

EPI Management

HELPING HAND



Help others achieve
their dreams and you
will achieve yours!



RE/MAX All Pro

Kathy Maykut
Broker Associate
CNC, CSC, CDPE

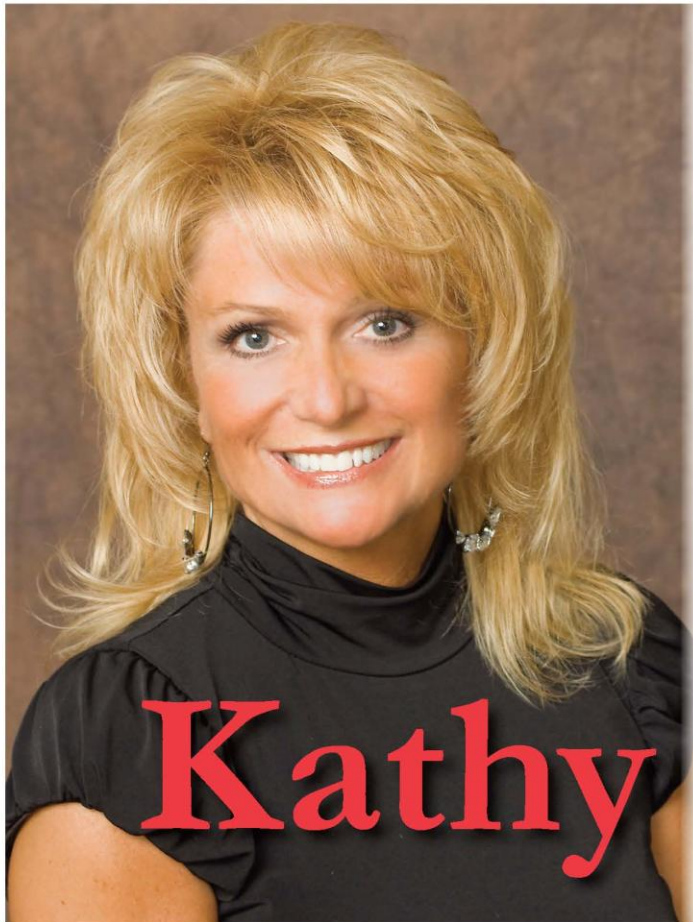
RE/MAX
Hall of Fame Member

Direct: 630-339-4051
Fax: 630-980-7291

kathymaykut@remax.net



Helping my clients make their real estate dreams come true is my **#1 GOAL!**
When you are ready to buy or sell, put your home in the hands of a professional.
Call me!!



630.339.4051

450 West Army Trail Road
Bloomington, Illinois 60108
(SW Corner of Army Trail & Gary Avenue)

Three Offices to Serve You...

BLOOMINGDALE ■ ST. CHARLES ■ SUGAR GROVE

www.KathyMaykut.com

**Multi -Million
Dollar Producer
RE/MAX All Pro**

Kathy Maykut
Realtor, CDPE, CNC, CSC



Enlighten

Personalized Solutions

Individual technology support at your pace in your place

- * Want to improve your child's technology skills (typing, Internet searching and safety, iPad use) this summer to be better prepared for school?
- * Do you or a member of your family need help with a computer, tablet, Smartphone, or software program?
- * Prefer personalized one-on-one guidance in your home or office that fits your schedule?

Bloomfield Club resident and experienced educator of children, adults, and seniors (M.S. Ed. in Instructional Technology) offers the solution you need with affordable rates and flexible scheduling. Special rates for Bloomfield Club residents.

Call Dawn Jacobsen at 708.625.5866 or e-mail: dawnmjacobson@gmail.com.