



Bloomfield Club News

Bloomfield Club Recreation Association

FEBRUARY, 2014

RESIDENT CHAMPAGNE BRUNCH! SUNDAY, MARCH 9th 11:00 a.m.-1:00 p.m.

All Bloomfield Club Residents are welcome to this delicious event. *THINK SPRING*, You'll enjoy the company of your neighbors and you'll enjoy a wonderful brunch as the Winter blues get chased away early in the up-coming season.

- SCRAMBLED EGGS, COOKED ON-SITE
- BAKED SLICED HAM
- CHEESE BLINTZES WITH BLUEBERRIES
- FRENCH TOAST WITH MAPLE SYRUP
- BACON/LINK SAUSAGE
- FRESH FRUITS/CHEESE TRAYS
- HASH BROWN POTATOES
- HOT MIXED VEGETABLES
- MUFFINS, BAGELS AND DANISH
- ORANGE, GRAPEFRUIT AND TOMATO JUICE



PLEASE R.S.V.P.
 In an effort to control costs, Residents must register and pick up tickets at the Clubhouse. No phone reservations, please. Tickets must be presented at the door.
 Pick up your free tickets for this event at the Clubhouse
 by
Wednesday, March 5th

CALENDAR

- CLUB EVENTS**
Card Club - Every Wednesday, 1:00-4:00
- MARK YOUR CALENDAR**
Children's Easter Egg Hunt, Saturday, April 12th from 11:00—12:30
Summer Party: Saturday, July 26th
- MEETINGS**
6 - BCI Board Meeting, 7:00
19 - BCRA Board Meeting, 7:00
26 - BCII Board Meeting, 7:00

ANNUAL INDOOR POOL/SPA CLEANING

The Indoor Pool/Spa will be Closed for Cleaning, Wednesday, February 5th - Friday, February 14th



BOARD NOTES

At the January 15th Board Meeting, the Board approved the following:

- The purchase from Fitness Experience of a recumbent bicycle for the Exercise Room.
- Fitness Experience to renovate and repair the two treadmills, the rower and one of the bicycles.

REMINDERS/INFO

- If you have a dog, make sure you pick up after it; also make sure it is not disturbing your neighbors and that it is on a leash when outside.
- All garbage must be placed in covered metal or plastic cans. Heavy duty tied plastic trash bags are also permitted. Light weight kitchen bags are not permitted, because they are easily torn by birds and animals. Please do not put out your trash until 6:00 p.m.
- In the indoor pool, any resident under 18 years of age must be accompanied by an adult. Also, children under five years of age are not allowed to use the Spa.
- Seasonal decorations must be removed no later than January 31st

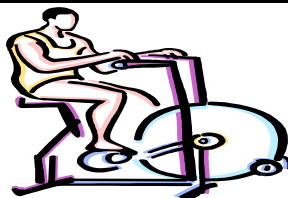
HAVE YOUR PARTY AT THE CLUBHOUSE!

Party Room Rates on Friday through Sunday afternoons and evenings: \$250 with a limit of 80 people.

If the Library is rented with the Party Room, the Library is only \$100.00. The Library is \$150.00 on any day if rented separately from the Party Room.

A dance floor can be rented for \$100.00. Rates are less on weekday afternoons and evenings. For info, call 630-529-9660.

**WOULD YOU LIKE
DIFFERENT CLUB
HOUSE HOURS SO YOU
CAN EXERCISE EARLIER?**



Give us your opinion by filling out a Survey at the Clubhouse. The Board wants your feedback on this issue so it can be considered in their discussion.

One possible option:

Except for the outdoor pool season, the Clubhouse could open at 6:00 a.m. on Mondays, Wednesdays and Fridays and would stay open until 9:00 p.m. On Tuesdays and Thursdays the Clubhouse would not open until 1:00 p.m. Weekend hours would remain the same (10:00 - 9:00).

BOARD OF DIRECTORS

President

Shawn Rodgers (BCIII)

Vice President

Mike Novinski (BCI)

Treasurer

Paul Palz (Luxury Homes)

Secretary

Marietta Serenda (BCIII)

Directors

Joseph Chranko (BCII)

Tony Fato (Luxury Homes)

Rich Tinaglia (BCI)

CLUBHOUSE STAFF

Club Director

Douglas Higgins

Administrative Assistant

MarLene McGuire

Attendants

Steven Dooman

Marge Harmon

John McGuire

Megan Stermetz

Clubhouse

Telephone: 630-529-9660

Website: bloomfieldclub.org

E-mail: club@bloomfieldclub.org

BCRA MANAGEMENT CO.

EPI: 630-990-0050

14032 S. Kostner

Crestwood, IL 60445

Property Manager:

Steve Elmore

BCI: Williamson Management

630-787-0305

BCII, BCIII & BCRA:

EPI Management

DEDICATION

Dedication is not what others expect of you,
it is what you can give to others.

It takes a
dedicated
real estate
professional
like me to help
make your
home sale
successful and
profitable.
I'll work hard
to bring you
great results!

Call Me For a FREE Market Analysis!!
630-339-4051



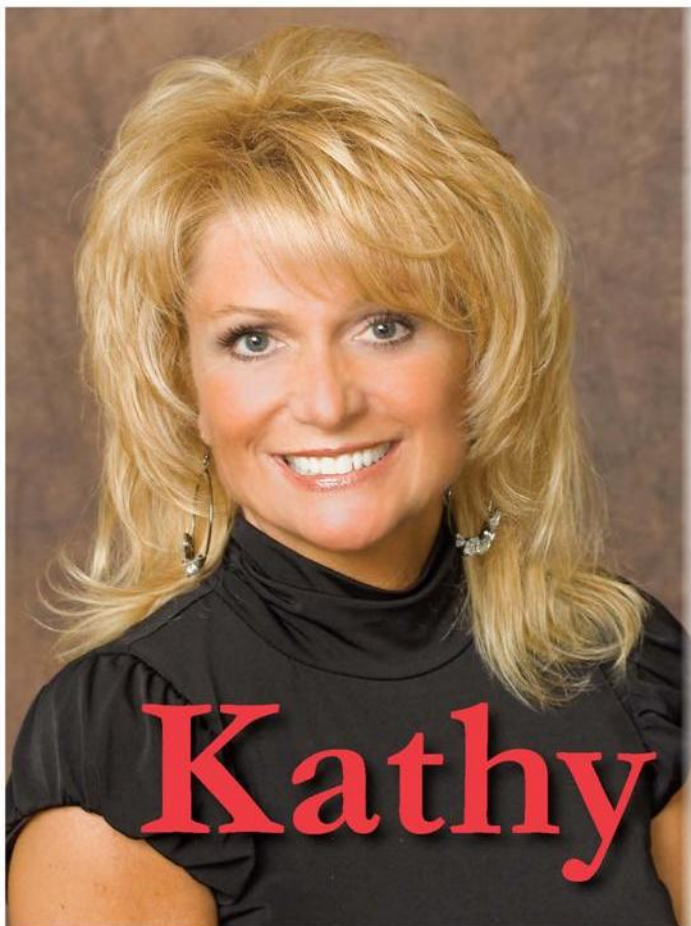
RE/MAX All Pro

Kathy Maykut
Broker Associate
CNC, CSC, CDPE

RE/MAX Hall of Fame
Member

Direct: 630-339-4051
Fax: 630-980-7291

kathymaykut@remax.net



630.339.4051

450 West Army Trail Road
Bloomington, Illinois 60108
(SW Corner of Army Trail & Gary Avenue)

Three Offices to Serve You...

BLOOMINGDALE ▪ ST. CHARLES ▪ SUGAR GROVE

www.KathyMaykut.com

**Multi -Million
Dollar Producer
RE/MAX All Pro**

Kathy Maykut
Realtor, CDPE, CNC, CSC