



# REMINDERS/INFO

- If you have a dog, make sure you pick up after it; also make sure it is not disturbing your neighbors and that it is on a leash when outside.
- No commercial trucks (plates C through Z) are allowed to park in open areas overnight.
- All garbage must be placed in covered metal or plastic cans. Heavy duty tied plastic trash bags are also permitted. Light weight kitchen bags are not permitted, because they are easily torn by birds and animals. Please do not put out your trash until 6:00 p.m.
- In the indoor pool, any resident under 18 years of age must be accompanied by an adult. Also, children under five years of age are not allowed to use the Spa.
- Seasonal decorations must be removed no later than January 31st

***PLANNING A PARTY? RENT THE ELEGANT CLUBHOUSE PARTY ROOM/LIBRARY.***

***CALL THE CLUBHOUSE FOR DETAILS.***

***The Library can now be rented separately for \$150 on any day. If rented with the Party Room, the rate is \$100 for the Library.***

***The Dance Floor can be rented for \$100. Rates are less on weekday afternoons and evenings.***

## BOARD OF DIRECTORS

### **President**

Shawn Rodgers (BCIII)

### **Vice President**

Mary Bahr (Luxury Homes)

### **Treasurer**

Paul Palz (Luxury Homes)

### **Secretary**

Marietta Serenda (BCIII)

### **Directors**

Joseph Chranko (BCII)

Mike Novinski (BCI)

Rich Tinaglia (BCI)

## CLUBHOUSE STAFF

### **Club Director**

Douglas Higgins

### **Administrative Assistant**

MarLene McGuire

### **Attendants**

Eddie Eisman

John McGuire

Peter Schenz

### **Clubhouse**

Telephone: 630-529-9660

Website: [bloomfieldclub.org](http://bloomfieldclub.org)

E-mail: [club@bloomfieldclub.org](mailto:club@bloomfieldclub.org)

## BCRA MANAGEMENT CO.

**EPI:** 630-990-0050

14032 S. Kostner

Crestwood, IL 60445

### **Property Manager:**

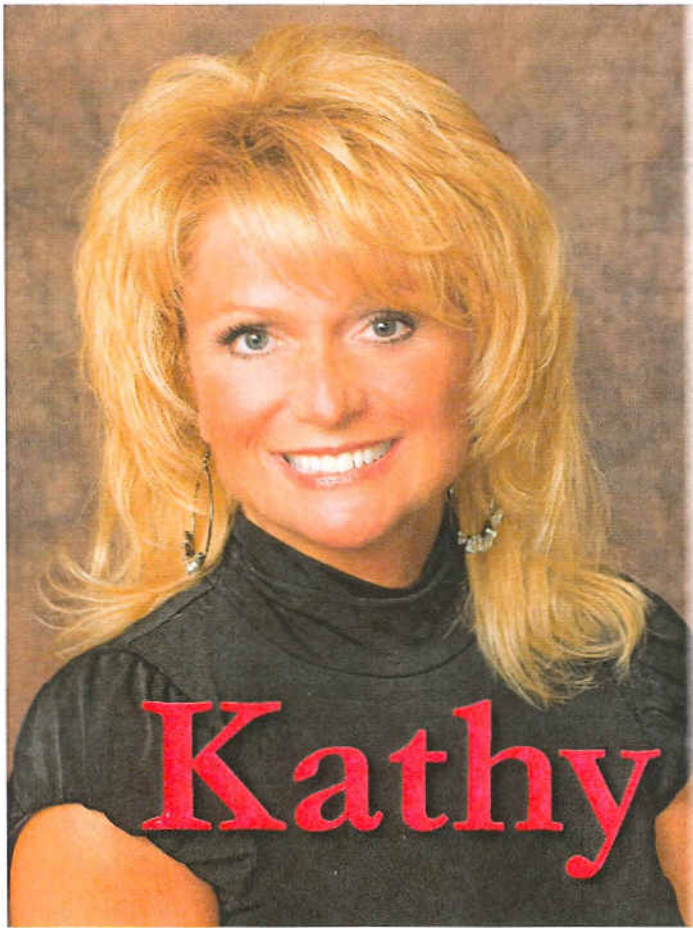
Steve Elmore

**BCI: Williamson Management**

630-787-0305

**BCII, BCIII & BCRA:**

**EPI Management**



630.339.4051

450 West Army Trail Road  
Bloomington, Illinois 60108  
(SW Corner of Army Trail & Gary Avenue)

*Three Offices to Serve You...*

BLOOMINGDALE • ST. CHARLES • SUGAR GROVE

[www.KathyMaykut.com](http://www.KathyMaykut.com)

**Multi -Million  
Dollar Producer  
RE/MAX All Pro**

**Kathy Maykut**

Broker Associate, CDPE, CNC, CSC

## Need Some Direction?

**YOU HAVE OPTIONS** | Are you Struggling to make your mortgage payments? Do you owe more than your house is worth? Need to sell? A short sale may be your answer.

**I CAN HELP** | I specialize in helping homeowners in almost any real estate situation to avoid foreclosure.

**CALL ME TODAY!**

630-339-4051



**RE/MAX All Pro  
Kathy Maykut  
Broker Associate  
CNC, CSC, CDPE  
630-339-4051**



CERTIFIED DISTRESSED  
PROPERTY EXPERT®

*Solving the foreclosure crisis  
one homeowner at a time.™*

HONESY | INTEGRITY | TRUST | NEIGHBORHOOD EXPERTISE

