



Bloomfield Club News

Bloomfield Club Recreation Association

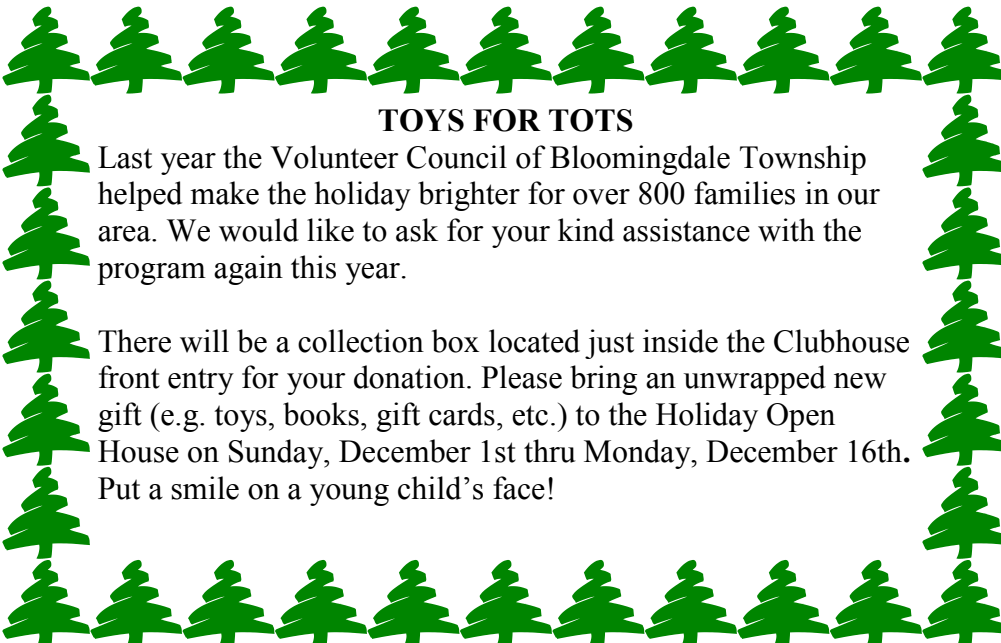
25th SILVER HOLIDAY OPEN HOUSE SUNDAY, DECEMBER 1st 5:00 — 8:00 p.m.

AS THE MAGIC OF THE HOLIDAYS APPROACHES, YOU ARE INVITED TO A GALA EVENING AT YOUR BEAUTIFULLY DECORATED CLUBHOUSE.

IT'S A CHANCE TO SHARE THE HOLIDAYS WITH YOUR NEIGHBORS, WHILE ENJOYING A DELICIOUSLY ELEGANT SELECTION OF CARVED MEATS AND AN ARRAY OF HORS D'OEUVRES SERVED BY GLENDALE CATERING. A SCRUMPTIOUS SWEET TABLE TOPS OFF THIS FABULOUS FARE. CHAMPAGNE WILL BE SERVED ALONG WITH WINE, BEER, SODA, COFFEE AND TEA.

PLEASE RSVP BY: WEDNESDAY, NOVEMBER 27th
PICK UP YOUR FREE TICKET AS SOON AS POSSIBLE.
YOU MUST HAVE A TICKET TO ATTEND.
FOR ADULT RESIDENTS OF BLOOMFIELD CLUB ONLY— NO GUESTS.

Fabulous Raffle for all Residents who sign the back of their reserved ticket. Prizes are two \$75.00 Gift Certificates to Fire + Wine Restaurant in Glen Ellyn. *Winner must be present.*



TOYS FOR TOTS

Last year the Volunteer Council of Bloomingdale Township helped make the holiday brighter for over 800 families in our area. We would like to ask for your kind assistance with the program again this year.

There will be a collection box located just inside the Clubhouse front entry for your donation. Please bring an unwrapped new gift (e.g. toys, books, gift cards, etc.) to the Holiday Open House on Sunday, December 1st thru Monday, December 16th. Put a smile on a young child's face!

DECEMBER, 2013

CLUB EVENTS

Card Club - Every Wednesday,
1:00-4:00

MEETINGS

18 - BCRA Board Meeting, 7:00

HOLIDAY HOURS FOR CLUBHOUSE

December 24 Christmas Eve
Club Closes at 1:00 p.m.

December 25 Christmas Day
Club Closed

December 31 New Year's Eve
Club Closes at 1:00 p.m.

January 1 New Year's Day
Club Closed



BOARD NOTES

At the November 20th Board Meeting, the Board of Directors approved:

The renewal of EPI's Management Contract. The fee remains the same for the next three years.

SANTA'S OPEN HOUSE

SUNDAY, DECEMBER 8th

11:00 a.m.—1:00 p.m.

Come to the Clubhouse and have a **FREE** picture taken of your child with Santa. Kathy Maykut from Re./Max All Pro is providing the pictures. *Why stand in long lines at the mall?*

Bloomfield Club Children and Guests are welcome to this special Holiday Event. You and your child can enjoy cookies and hot chocolate while you're visiting with Santa and your neighbors. Also, children can make a holiday craft if they wish.

Santa will have a gift waiting for each child and he's anxious to receive a Holiday Wish List from all the girls and boys.

Resident Children: No Charge

Guest Children: \$3.00 at door



KEEP OUR ASSOCIATION LOOKING BEAUTIFUL!

Remember that, by Village Ordinance and Association Rules, all trash cans must be stored in the garage and items such as ladders, construction and lawn materials, cannot be visible from the street. Please pick up all newspapers on your driveway and clean up after your dog.



HAVE YOUR PARTY AT THE CLUBHOUSE!

Party Room Rates on Friday through Sunday afternoons and evenings: \$250 with a limit of 80 people.

If the Library is rented with the Party Room, the Library is only \$100.00. The Library is \$150.00 on any day if rented separately from the Party Room.

A dance floor can be rented for \$100.00. Rates are less on weekday afternoons and evenings. For info, call 630-529-9660.

BOARD OF DIRECTORS

President

Shawn Rodgers (BCIII)

Vice President

Mike Novinski (BCI)

Treasurer

Paul Palz (Luxury Homes)

Secretary

Marietta Serenda (BCIII)

Directors

Joseph Chranko (BCII)

Tony Fato (Luxury Homes)

Terry Tinaglia (BCI)

CLUBHOUSE STAFF

Club Director

Douglas Higgins

Administrative Assistant

MarLene McGuire

Attendants

Steven Dooman

John McGuire

Megan Stermetz

CLUBHOUSE

Telephone: 630-529-9660

Website: bloomfieldclub.org

Email: club@bloomfieldclub.org

MANAGEMENT CO.

EPI: 630-990-0050

14032 S. Kostner

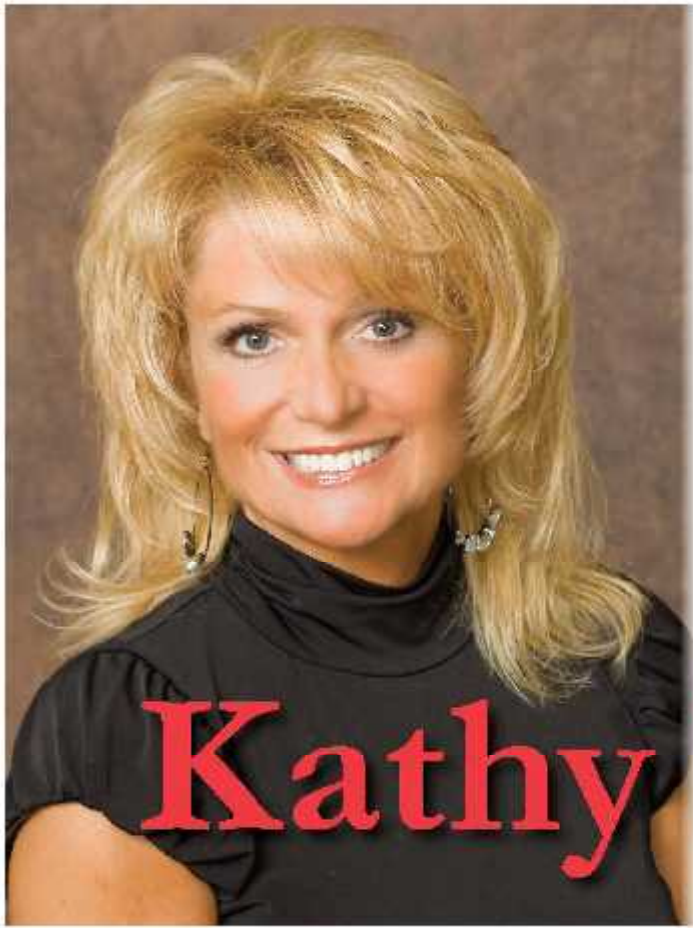
Crestwood, IL 60445

Property Manager:

Steve Elmore

BCI: Williamson Management
630-787-0305

BCII, BCIII & BCRA:
EPI Management



630.339.4051

450 West Army Trail Road
Bloomington, Illinois 60108
(SW Corner of Army Trail & Gary Avenue)

Three Offices to Serve You...

BLOOMINGDALE • ST. CHARLES • SUGAR GROVE

www.KathyMaykut.com

**Multi -Million
Dollar Producer
RE/MAX All Pro**

Kathy Maykut

**RE/MAX Hall of Fame Member
Broker Associate, CDPE, CNC, CSC**



HAPPY HOLIDAYS!

*I would like to extend my warmest Holiday wishes to you and your loved ones this season.
May the new year bring you joy and happiness! **Kathy Maykut***