



# Bloomfield Club News

*Bloomfield Club Recreation Association*

## HOLIDAY OPEN HOUSE

SUNDAY, DECEMBER 4th

5:00 — 8:00 p.m.

AS THE MAGIC OF THE HOLIDAYS APPROACHES, YOU ARE INVITED TO A GALA EVENING AT YOUR BEAUTIFULLY DECORATED CLUBHOUSE.

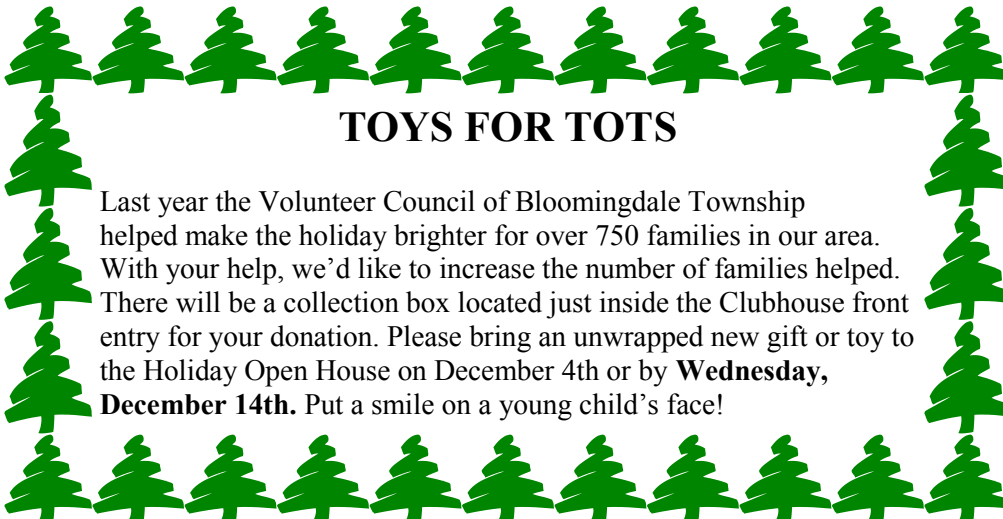
IT'S A CHANCE TO SHARE THE HOLIDAYS WITH YOUR NEIGHBORS, WHILE ENJOYING A DELICIOUSLY ELEGANT SELECTION OF CARVED MEATS AND AN ARRAY OF HORS D'OEUVRES SERVED BY GLENDALE CATERING. A SCRUMPTIOUS SWEET TABLE TOPS OFF THIS FABULOUS FARE. CHAMPAGNE WILL BE SERVED ALONG WITH WINE, BEER, SODA, COFFEE AND TEA.

PLEASE RSVP BY: THURSDAY, DECEMBER 1ST

PICK UP YOUR FREE TICKET AS SOON AS POSSIBLE. YOU MUST HAVE A TICKET TO ATTEND. FOR ADULT RESIDENTS OF BLOOMFIELD CLUB ONLY— NO GUESTS.

Fabulous Raffle for all Residents who have signed up for e-mailing of future newsletters by **Thursday, December 1st.**

Prizes are three \$50.00 Gift Certificates to neighboring restaurants. Winner need not be present.



### TOYS FOR TOTS

Last year the Volunteer Council of Bloomingdale Township helped make the holiday brighter for over 750 families in our area. With your help, we'd like to increase the number of families helped. There will be a collection box located just inside the Clubhouse front entry for your donation. Please bring an unwrapped new gift or toy to the Holiday Open House on December 4th or by **Wednesday, December 14th.** Put a smile on a young child's face!

**DECEMBER, 2011**

#### CLUB EVENTS

Card Club - Every Wednesday, 1:00-4:00

#### MEETINGS

1 - BCI Board Meeting, 7:00  
21 - BCRA Board Meeting, 7:00

#### HOLIDAY HOURS FOR CLUBHOUSE

December 24 Christmas Eve  
Club Closes at 2:00 p.m.  
  
December 25 Christmas Day  
Club Closed  
  
December 31 New Year's Eve  
Club Closes at 2:00 p.m.  
  
January 1 New Year's Day  
Club Closed



#### BOARD NOTES

At the November 16th Board Meeting, the Board of Directors approved:

- ◆ Al's Accurate Electric to repair the ground fault from the Card Access System to the East gate.
- ◆ Pools Direct to replace the outdoor pool cover.

# SANTA'S OPEN HOUSE

SUNDAY, DECEMBER 11th

11:00 a.m.—1:00 p.m.

Come to the Clubhouse and have a **FREE** picture taken of your child with Santa. Kathy Maykut from Re./Max All Pro is providing the pictures. *Why stand in long lines at the mall?*

Bloomfield Club Children and Guests are welcome to this special Holiday Event. You and your child can enjoy cookies and hot chocolate while you're visiting with Santa and your neighbors. Also, children can make a holiday craft if they wish.

Santa will have a gift waiting for each child and he's anxious to receive a Holiday Wish List from all the girls and boys.

*Resident Children: No Charge*  
*Guest Children: \$3.00 at door*



## A WARNING FROM THE BLOOMINGDALE POLICE DEPARTMENT

There have been recent Ruse Burglaries. A group of individuals use a ruse to enter people's homes in order to steal cash, jewelry and other valuables. The suspects offer to clean leaves or cut down tree limbs or repair roofs or driveways. Other scams are used to enter your property. **Advice:** Never open your door to strangers, contact the police about any suspicious people or activity, keep doors and windows locked at all times.

## KEEP OUR ASSOCIATION LOOKING BEAUTIFUL!

Article III of the Recreation Association's Declaration, under Building Use and Restrictions, says:

**"all....equipment, garbage cans...woodpiles, and storage piles shall be kept screened by adequate planting or fencing so as to conceal them from view of neighboring Units and streets. All rubbish, trash, and garbage shall be regularly removed from the Community and shall not be allowed to accumulate thereon."**

**THANK YOU FOR YOUR COOPERATION!**

## BOARD OF DIRECTORS

### President

Shawn Rodgers (BCIII)

### Vice President

Mary Bahr (Luxury Homes)

### Treasurer

Paul Palz (Luxury Homes)

### Secretary

Marietta Serenda (BCIII)

### Directors

Joseph Chranko (BCII)

Mike Novinski (BCI)

Rich Tinaglia (BCI)

## CLUBHOUSE STAFF

### Club Director

Douglas Higgins

### Administrative Assistant

MarLene McGuire

### Attendants

Eddie Eisman

John McGuire

Peter Schenz

## CLUBHOUSE

Telephone: 630-529-9660

Website: bloomfieldclub.org

Email: club@bloomfieldclub.org

## MANAGEMENT CO.

EPI: 630-990-0050

14032 S. Kostner

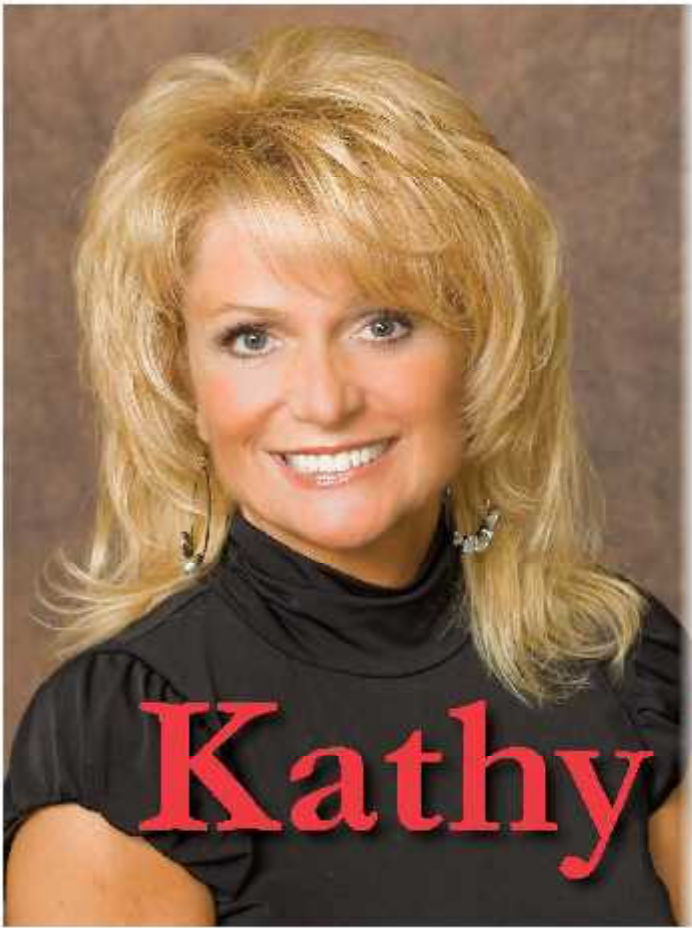
Crestwood, IL 60445

### Property Manager:

Steve Elmore

BCI: Williamson Management  
630-787-0305

BCII, BCIII & BCRA:  
EPI Management



**Kathy**



**630.339.4051**

450 West Army Trail Road  
Bloomington, Illinois 60108  
*(SW Corner of Army Trail & Gary Avenue)*

*Three Offices to Serve You...*

**BLOOMINGDALE • ST. CHARLES • SUGAR GROVE**

**[www.KathyMaykut.com](http://www.KathyMaykut.com)**

**Multi -Million  
Dollar Producer  
RE/MAX All Pro**

**Maykut**  
Realtor, CDPE, CNC, CSC



**RE/MAX All Pro  
Kathy Maykut  
Broker Associate, CNC,  
CSC, CDPE  
630-339-4051**



CERTIFIED DISTRESSED  
PROPERTY EXPERT

50% OFF (20% OFF) on  
ALL HOMEOWNERS' EQUITY



Warmest Holiday Wishes from your Real Estate professional. May Joy and Peace be yours this Holiday Season and throughout the new year. Happy Holidays!